




 **Artival**
Research & Evaluation

*Consultancy services for social research and
evaluation*

 www.artival.es

 info@artival.es

 Artival research & Evaluation

SUMMARY

1.WHO WE ARE

About us

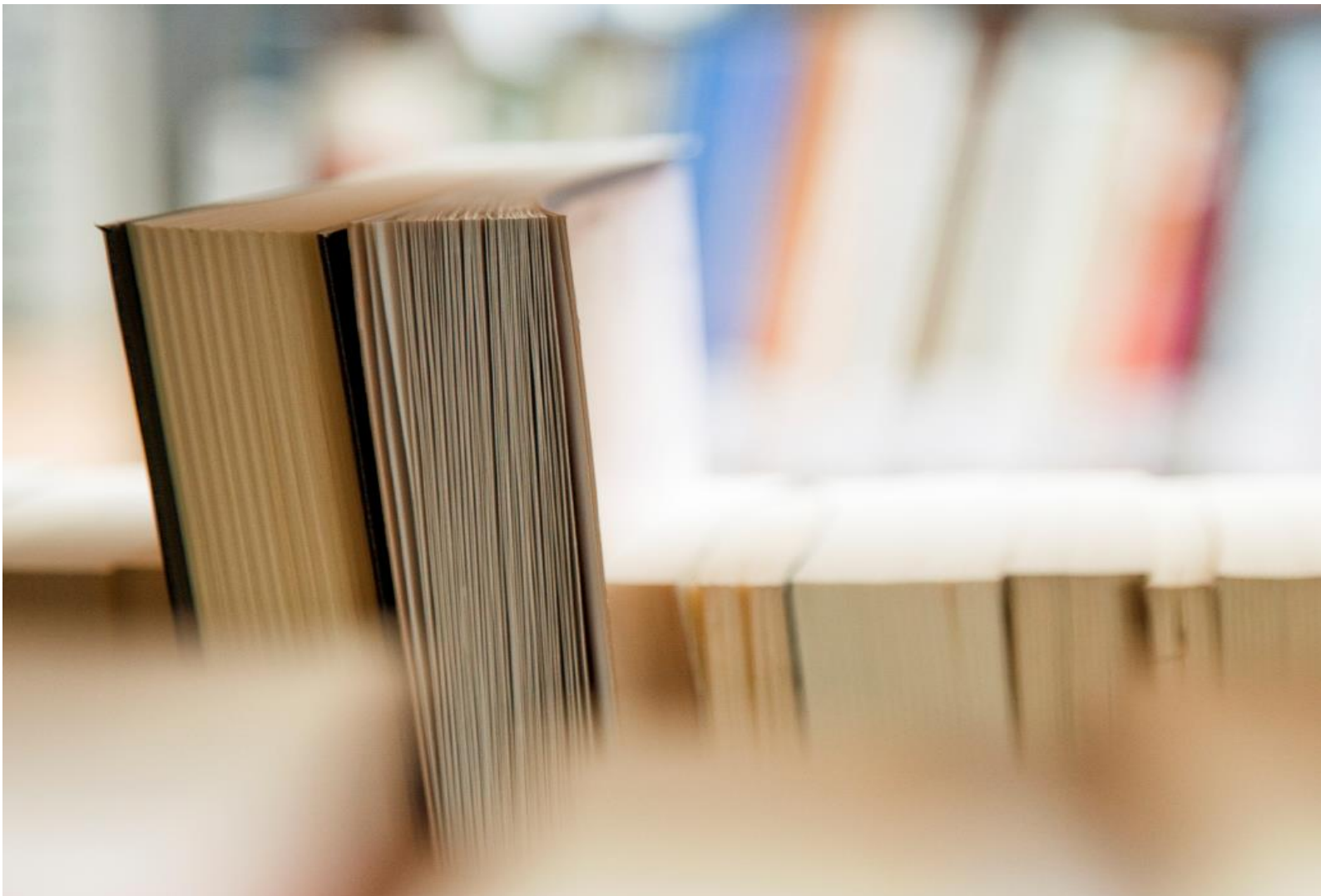
2.OUR APPROACH

Hallmarks

3.SERVICES

4.RESOURCES

5.ACTIVITY REPORT



SUMMARY



ABOUT US:

We are a multidisciplinary consulting team

Specialists in applied research

In pursuit of high quality standards

Management of the cycle of social interventions

With a wide network of experts

We work in an artisan way

OUR APPROACH

We provide innovative and creative solutions

We design visual and easy-to-use materials

Combining traditional research strategies with methodological advances

We follow an approach based on:

- Gender equality
- Environmental sustainability
- Respect for human rights
- Attention for diversity

SERVICES

Tailor-made research and evaluation

Our areas of work:

- Research
- Programming
- Capacity-building
- Evaluation

We have experience in more than 80 countries

Working with International Organisations, public entities, private companies and third-sector organisations

adapted to each intervention

CONTACT:

Work with us:

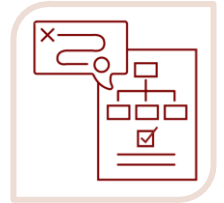


www.artival.es



1. WHO WE ARE

We are a consulting firm specialized in applied research and the design and evaluation of social initiatives led by public, private and third-sector entities. At Artival, we know one size does not fit all, and understand the uniqueness of each assignment and the complexity of the contexts in which social interventions take place. We see ourselves as artisans, always striving to achieve the highest professional excellence.



We consider that evaluation is both an art and a science. The art of evaluation involves the creative and innovative solutions customized to our client's information needs in real-world conditions. We identify purposes and audiences, creating appropriate evaluation designs, interpreting data, making sound judgments and communicating them effectively. The science of evaluation involves systematically gathering and analyzing evidence about the evaluand.



About us

Artival is the result of the forces of a team of consultants that decided to be part of something bigger than themselves, working toward a common goal and enabling a greater impact of their efforts. Our shared goal is contributing to the progressive improvement of social and development initiatives through the provision of valuable and useful research, evaluation and capacity-building solutions.



Since 2015 we have been providing services focused on generating key information for our clients for informed decision-making, knowledge generation and learning and accountability. We contribute to our mission by offering professionalism, fairness, independence, integrity and reliability.

We simply love what we do, and are always committed to the highest standards, going the extra mile to maximize the value of our products.



2. OUR APPROACH



- A multidisciplinary fit-for-purpose and cost-effective service, based on innovation and creativity.

- We follow a value-based approach, ensuring that our partners and clients share our principles of social rights and environmental sustainability.



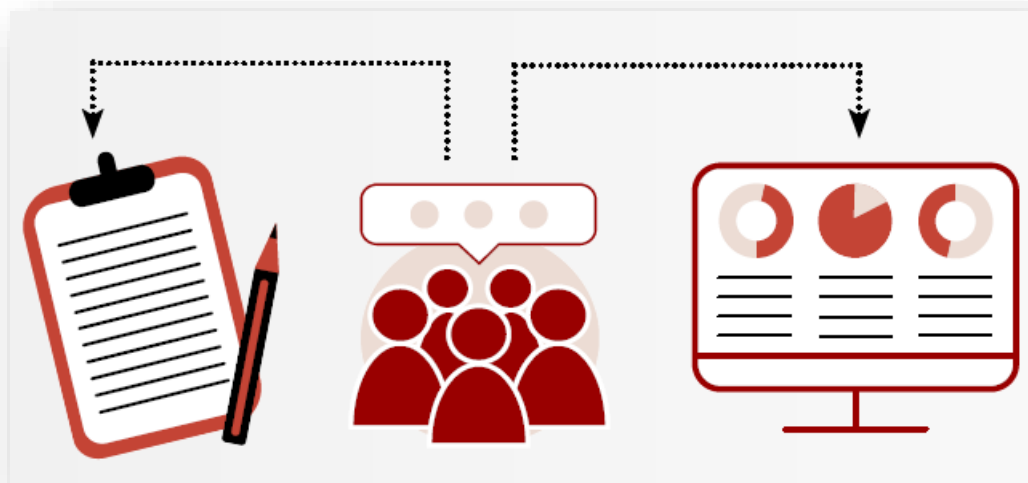
- We are continuously looking for innovative approaches and tools to boost the utility of our products and ensure their relevance.

- We believe that each assignment is unique and therefore we avoid ready-made solutions, considering ourselves artisans who are true to their craft.



Hallmarks

We promote research and evaluation culture for organizational learning and development. As well as a service approach based on innovation and creativity, developing tailor-made solutions in order to generate a clear value added to our clients. We believe that each evaluation is unique and therefore we avoid ready-made solutions, considering ourselves artisans who are true to their craft.







We maximize the use of our research works and evaluations by communicating findings through data visualization. We design compelling data-rich graphics that bring out hidden stories, with the aim of reaching and informing the highest number of target users

3. SERVICES



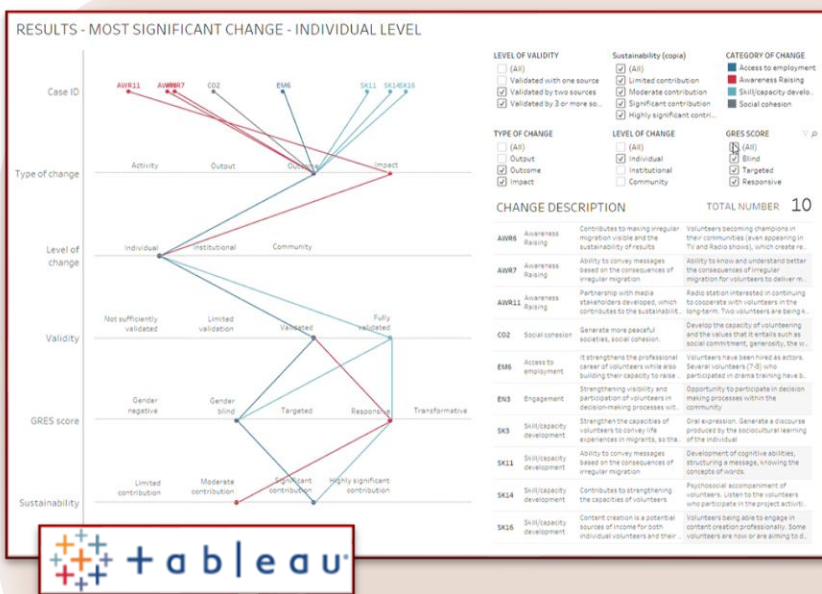
We have a track record of helping organizations make informed decisions and deal with change to improve their social and development actions.

The following are the key areas in which we focus our efforts:

RESEARCH	PROGRAMMING
 <ul style="list-style-type: none"> ▪ Research in the social & development sectors ▪ Identification & diagnosis ▪ Strategic planning & benchmarking 	<ul style="list-style-type: none"> ▪ Programme theory, designs & systematizations ▪ Monitoring & evaluation systems ▪ Baseline design 
EVALUATION	CAPACITY BUILDING
 <ul style="list-style-type: none"> ▪ Needs assessments ▪ Evaluability assessments ▪ Multidimensional evaluation designs ▪ Meta-analysis & meta-evaluation 	<ul style="list-style-type: none"> ▪ Identification & systematization ▪ Programming ▪ Result-based management ▪ Monitoring & evaluation 

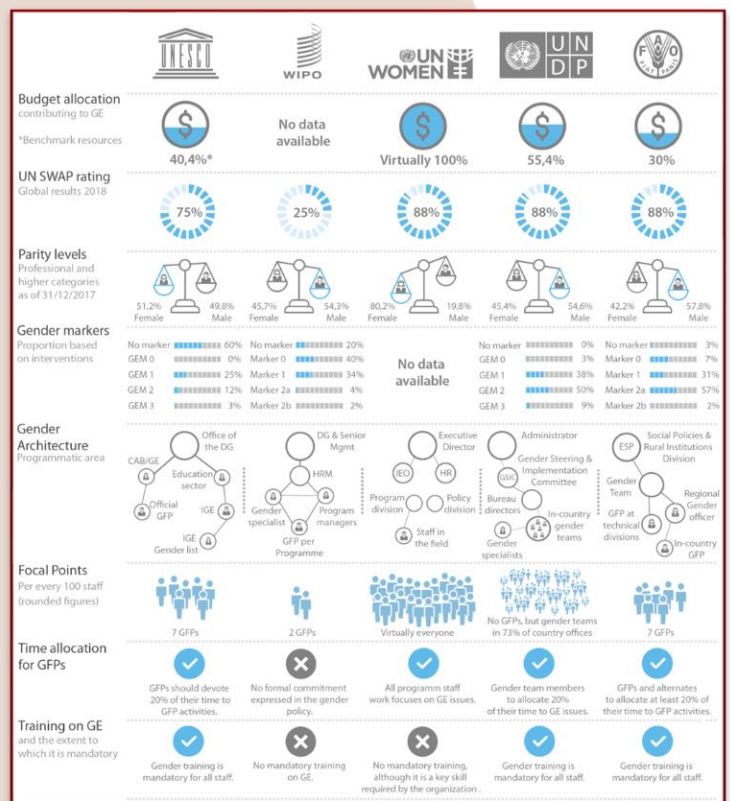
4. RESOURCES

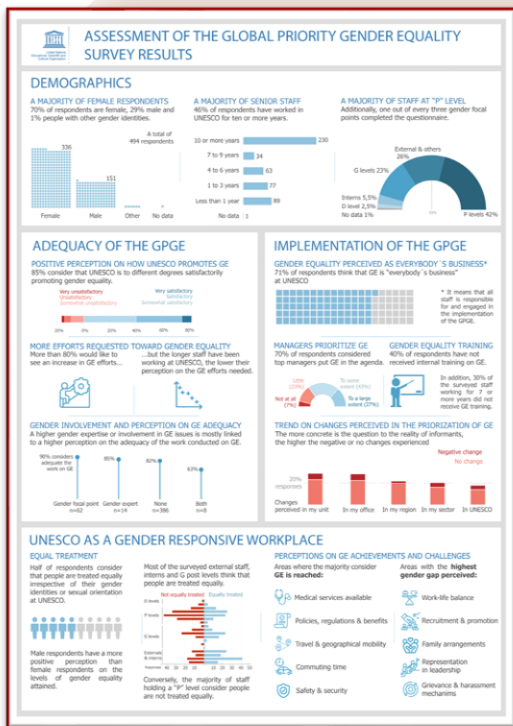
We design highly visual and user-friendly products that bring out hidden stories, aimed at informing and engaging targeted audiences. Below is an example of the most recent resources we have created for our clients:



We devise a visual system to identify patterns using qualitative data

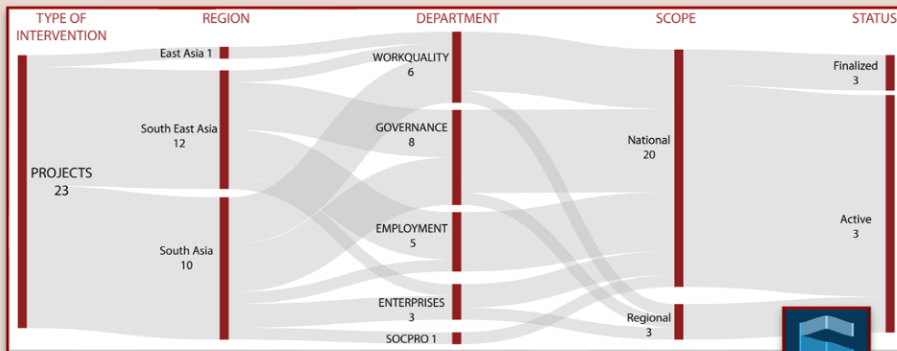
Presentation of visual benchmark analysis





Design of infographic survey results

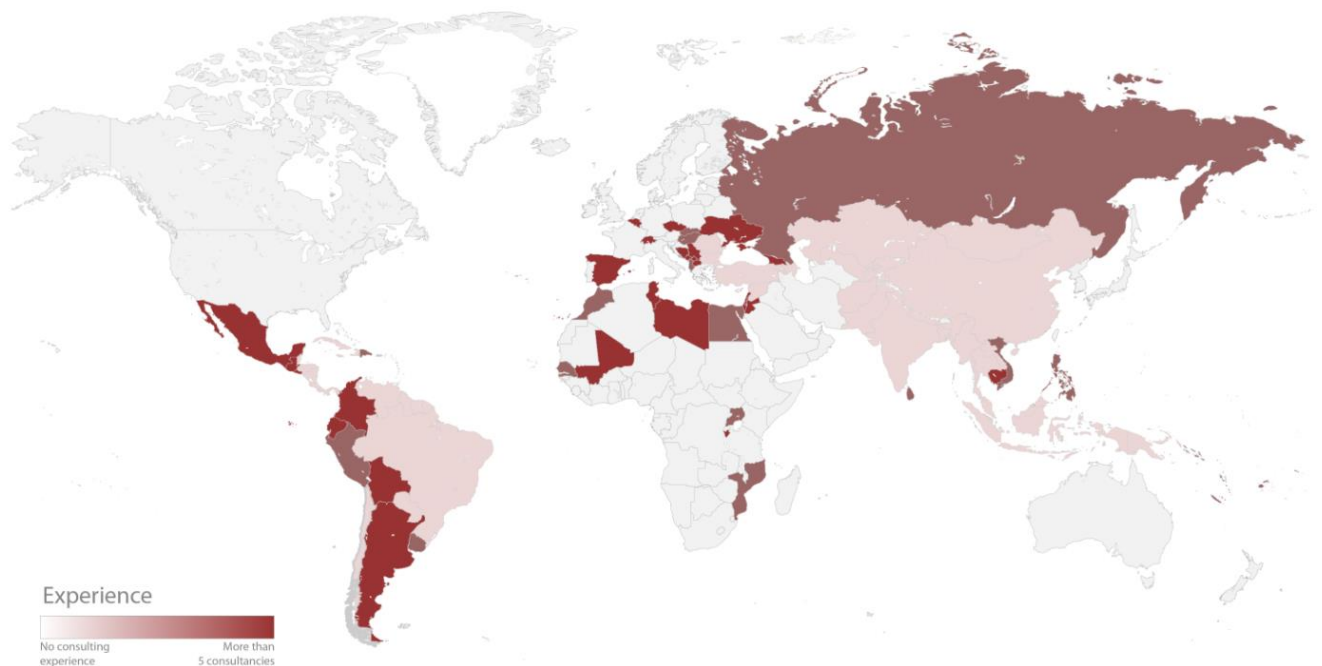
Elaboration of diagrams to show relationships between variables and their interconnections



5. ACTIVITY REPORT

Artival offers a variety of research, evaluation and capacity building solutions within the humanitarian and international development sector, involving a wide range of organizations, as well as governments and the private sector. We have experience in more than 80 countries worldwide.





Among others, we have provided research & evaluation services to the following international organizations, foundations and research institutes:

2023

UNITED NATIONS CHILDREN'S FUND (UNICEF)

GLOBAL

Evaluability Assessment and Formative Evaluation of UNICEF's Approaches to Advocacy.

INTERNATIONAL ORGANIZATION FOR MIGRATION (IOM)

GLOBAL

Evaluation of Results-Based Management at IOM

INTERNATIONAL LABOUR ORGANIZATION (ILO)

ECUADOR AND PERU

Evaluability Assessment for Fisheries Project

PABLO OLAVIDE UNIVERSITY

SPAIN

Assessment of projects to be submitted to the AACID Universities 2023 call

INTERNATIONAL ORGANIZATION FOR MIGRATION (IOM)

GLOBAL

Ex-Post Evaluations of IOM Development Fund Projects

PABLO OLAVIDE UNIVERSITY

SPAIN

Internal ex-ante evaluation for Pablo Olavide University 2023

ADVANCED CONSULTING**JORDAN**

Support to the implementation of Advanced Consulting projects in the Netherlands, Kenya, Jordan, and Burkina Faso

INTERNATIONAL MEDIA SUPPORT (IMS)**SOMALIA**

Review of media development project in Somalia

2022**UNESCO****GLOBAL**

Evaluation of UNESCO's Global Priority Gender Equality, Phase 2.

INTERNATIONAL ORGANIZATION FOR MIGRATION (IOM)**GLOBAL**

Strategic Evaluation of Results-Based Management at IOM

WORLD FOOD PROGRAMME**CAMBODIA**

Mid-Term formative Evaluation of WFP's Cambodia Country Strategic Plan 2019-2023

ALIANZA POR LA SOLIDARIDAD**GAZA**

External Evaluation of The Project "Strengthening Protection Mechanisms and Community Responses For Survivors Of Gender-Based Violence In Gaza"

INTERNATIONAL ORGANIZATION FOR MIGRATION (IOM)**14 COUNTRIES FROM THREE DIFFERENT REGIONS (AFRICA, MIDDLE EAST AND ASIA).**

Baseline assessment of the COMPASS initiative, following the results of the evaluability assessment previously conducted.

PABLO OLAVIDE UNIVERSITY**SPAIN**

Ex-ante evaluation of development cooperation projects for the region of Andalucia.

INTERNATIONAL ORGANIZATION FOR MIGRATION (IOM)**WEST AFRICA**

External Final Evaluation of the Migrants as Messengers (MaM) Phase 2 Initiative.

PABLO OLAVIDE UNIVERSITY**SPAIN**

Assessment of projects to be submitted to the AACID Universities 2023 call

INTERNATIONAL COMMITTEE OF THE RED CROSS (ICRC)**GLOBAL**

ICRC's Evaluation Services Framework Agreement

INTERNATIONAL LABOUR ORGANIZATION (ILO)**ECUADOR, PERÚ**

Final independent clustered evaluation of labour migration in Ecuador and Peru

NGO COORDINATOR FOR THE REGION OF MURCIA, SPAIN**SPAIN**

Training in Theory of Change

EXPERTISE FRANCE/OAG**AFRICA**

Analysis of the gender dimension of human trafficking in the Gulf of Guinea

FUNDACIÓN INTERNACIONAL Y PARA IBEROAMÉRICA DE ADMINISTRACIÓN Y POLÍTICAS PÚBLICAS (FIIAPP)**LATIN AMERICA**

Final Evaluation AMERIPOL Project

FUNDACIÓN INTERNACIONAL Y PARA IBEROAMÉRICA DE ADMINISTRACIÓN Y POLÍTICAS PÚBLICAS (FIIAPP)**AFRICA**

European policy study - MIGRASAFE

2021**INTERNATIONAL LABOUR ORGANIZATION (ILO)****COLOMBIA**

Final Independent Clustered Evaluation of the International Labour Organization's Vocational Training Programme in Colombia

INTERNATIONAL ORGANIZATION FOR MIGRATION (IOM)**AFRICA, MIDDLE EAST AND ASIA**

Baseline Assessment of the Cooperation on Migration and Partnerships to Achieve Sustainable Solutions (COMPASS) project.

PLAN INTERNATIONAL**SPAIN AND BELGIUM**

External Final Evaluation of the project "Safer Cities for Girls in Belgium and Spain thanks to Champions of Change"

UNIVERSITY OF ZARAGOZA**SPAIN**

Training course "Managing for Development Results: from theory to practice".

NGO COORDINATOR FOR THE REGION OF MURCIA, SPAIN**MURCIA,****SPAIN**

Online course on Result-oriented evaluation with a gender perspective

UNICEF (WACRO (REGIONAL OFFICE WEST AND CENTRAL AFRICA)**EQUATORIAL GUINEA**

Multi-Country Formative Evaluation of the Key Result for Children (KRC) #7 (Birth Registration) for period 2018-2020.

INTERNATIONAL LABOUR ORGANIZATION (ILO)**GLOBAL**

Translation of technical materials for Evaluation Office

ALLIANCE FOR SOLIDARITY**PALESTINE**

Evaluation of the project "Strengthening protection mechanisms and community responses for survivors of Gender-based Violence in Gaza"

INTERNATIONAL ORGANIZATION FOR MIGRATION (IOM)**AFRICA, MIDDLE EAST AND ASIA**

Evaluability Assessment of the Cooperation on Migration and Partnerships to Achieve Sustainable Solutions (COMPASS) project.

INTERNATIONAL LABOUR ORGANIZATION (ILO)

BRAZIL

Mid-term evaluation of the Project "Promotion and implementation of Fundamental Rights and Principles of Labour in Brazil".

BASQUE AGENCY FOR DEVELOPMENT COOPERATION – EUSKAL FONDOA**SPAIN, EL SALVADOR, COSTA RICA**

Evaluation of the Interinstitutional Program for Cooperation on Water and Sanitation Euskadi-Central America.

ALLIANCE FOR SOLIDARITY**PALESTINE**

Evaluation of the project "Palestinian Women Enjoying their Economic Rights and Generating Social Change".

MIGUEL HERNÁNDEZ UNIVERSITY**SPAIN**

Final evaluation of the project "2018 University Cooperation for Development".

PABLO OLAVIDE UNIVERSITY**SPAIN**

Evaluation of the projects submitted to the call for development projects launched by the Andalusian Government.

*2020***ALIANZA POR LA SOLIDARIDAD (APS)****PALESTINE**

Evaluation of the project Palestinian Women Enjoying their Economic Rights and Generating Social Change.

INTERNATIONAL ORGANIZATION FOR MIGRATION (IOM)**WESTERN BALKANS**

Mid-term evaluation "Moving Towards Sustainable Approaches to Prevent Violent Extremism in the Western Balkans".

UNITED NATIONS POPULATION FUND (UNFPA)**ASIA & THE PACIFIC**

Evaluation of the Advocacy Efforts of the Regional Interventions Action Plan (2018-2021)

INTERNATIONAL LABOUR ORGANIZATION (ILO)**BRAZIL, PERU, PARAGUAY, MALI Y MOZAMBIQUE**

Mid-term Evaluation of the "Cotton with Decent Work" Programme.

INTERNATIONAL CENTRE FOR MIGRATION POLICY DEVELOPMENT (ICMPD)**GLOBAL**

Evaluation of the communication strategy of the Joint EU-ICMPD "Migration EU Expertise (MIEUX) III" Initiative 2016-2019.

INTERNATIONAL INSTITUTE FOR NONVIOLENT ACTION (NOVACT)**JORDAN**

Evaluation of the INDICASERE Program.

UNITED NATIONS EDUCATIONAL, SCIENTIFIC AND CULTURAL ORGANIZATION (UNESCO)**GLOBAL**

Evaluation of UNESCO's Global Priority Gender Equality, Phase 1.

INTERNATIONAL ORGANIZATION FOR MIGRATION (IOM)**GLOBAL**

Meta-Evaluation of 95 internal and external evaluations conducted by/for the IOM in the period 2017-2019.

SPANISH AGENCY FOR INTERNATIONAL COOPERATION AND DEVELOPMENT (AECID)**JORDAN**

Identification analysis for the intervention "Access to justice and legal empowerment in Jordan".

PREDREGUER CITY COUNCIL**SPAIN**

Ex-ante evaluation of a series of intervention's proposal submitted to an European Union grant.

OXFAM INTERNATIONAL**WEST AFRICA**

Final evaluation of the Oxfam in West Africa Regional Strategy and Operational Model.

DOCTORS OF THE WORLD (DoW)**MALI**

Final evaluation of the Programme "Strengthening the health system in Bafoulabe, region of Kayes, Mali".

INTERNATIONAL SOLIDARITY VALENCIAN COMMUNITY (SIPV)**SPAIN**

Training to improve the formulation of projects for participation in calls for cooperation and education for the development.

*2019***UNITED NATIONS POPULATION FUND (UNFPA)****THE PACIFIC**

Evaluability Assessment of the Transformative Agenda and the Pacific Sub Regional.

MOVEMENT FOR PEACE, DISARMAMENT AND FREEDOM (MPDL)**MALI**

Elaboration of a manual comprising the strategic review of all the MPDL actions in Mali from 2008 to 2018.

COMMONWEALTH OF LEARNING**UGANDA**

Final evaluation of the Kampabits project following a Social Return of Investment approach.

NGO COORDINATOR OF VALENCIA (CVONGD)**SPAIN**

Workshop on the design of baselines for Development Education projects according to the Kirkpatrick model.

FACTORÍA CULTURAL**ESPAÑA Y COLOMBIA**

Final evaluation of the "Yo en Digital" project, a free ITC training intervention for Colombian women.

INTERNATIONAL LABOUR ORGANIZATION (ILO)**ASIA & THE PACIFIC**

Synthesis review of gender mainstreaming in Decent Work Country Programmes and ILO's development cooperation projects in Asia and the Pacific during 2010-2018

2018

OXFAM INTERNATIONAL**RUSSIA**

Strategic review and mid-term evaluation of Oxfam International's presence in Russia (2017-2019).

WORLD INTELLECTUAL PROPERTY ORGANIZATION (WIPO)**SWITZERLAND**

Evaluation of the Pilot Program on Professional and Career Development (Phase 2).

INTERNATIONAL LABOUR ORGANIZATION (ILO)**LATIN AMERICA**

Final evaluation of the Regional Initiative to declare Latin America and the Caribbean free of child labour.

INTERNATIONAL LABOUR ORGANIZATION (ILO)**SWITZERLAND, BOLIVIA, SPAIN**

Final evaluation of the ILO-SIDA Partnership Programme (2014-17).

2017

SAVE THE CHILDREN (STC) – ACTION AGAINST HUNGER**PHILIPPINES**

Mid-term evaluation of a Consortium aimed at strengthening DRR and the response to humanitarian crises.

CATHOLIC RELIEF SERVICES (CRS) - MERCY CORPS**ECUADOR**

Final evaluation of an intervention supporting population affected by earthquakes.

INTERNATIONAL LABOUR ORGANIZATION (ILO)**GLOBAL**

Meta-evaluation of 87 evaluations produced from the 2015 to 2017, including the UN SWAP assessment.

INTERNATIONAL LABOUR ORGANIZATION (ILO)**ALBANIA, MACEDONIA, SERBIA**

Evaluation of a Multi-country intervention preventing the exclusion of Roma Children through ECD.

2016

SAVE THE CHILDREN (STC)**CAMBODIA**

Meta-analysis/evaluation of 40 studies on how to generate impact for children produced between 2012-16

UNITED NATIONS DEVELOPMENT PROGRAMME (UNDP)**MEXICO**

Result-based M&E system for a national Programme aimed at strengthening citizen participation.

2015

JUSTICE COOPÉRATION INTERNATIONALE (JCI) - FUNDACIÓN ABOGACÍA ESPAÑOLA

GUATEMALA

Design of a Result-based M&E system for the EuroSocial program, "Access to Justice" sector in Guatemala.

WORLD INTELLECTUAL PROPERTY ORGANIZATION (WIPO)

MOROCCO, ARGENTINA

Evaluación de proyecto piloto de apoyo a PYMES argentinas y marroquíes. Evaluation of a pilot project aimed at supporting Enterprises in Argentina and Morocco.

WORLD INTELLECTUAL PROPERTY ORGANIZATION (WIPO)

SWITZERLAND

Evaluation of the Program on Copyright implemented in more than 150 countries in the period 2010-2015.

UNITED NATIONS CHILDREN S FUND (UNICEF)

MONTENEGRO


Evaluation of the Project "Using textbooks in DAISY format".



 **Artival**
Research & Evaluation

 www.artival.es

 info@artival.es

 Artival research & Evaluation